

ATTACHMENT M TO DECLARATION BY ALICE C. NEWTON

United States v. Bundy, No. 2:12-cv-804-LDG-GWF

Aerial Cattle Survey - Fixed Wing Page 1 of 1Date: 2/15/2017 Time Start: 8:40 AM Time Stop: 10:30 AM

GPS:

Maps used:

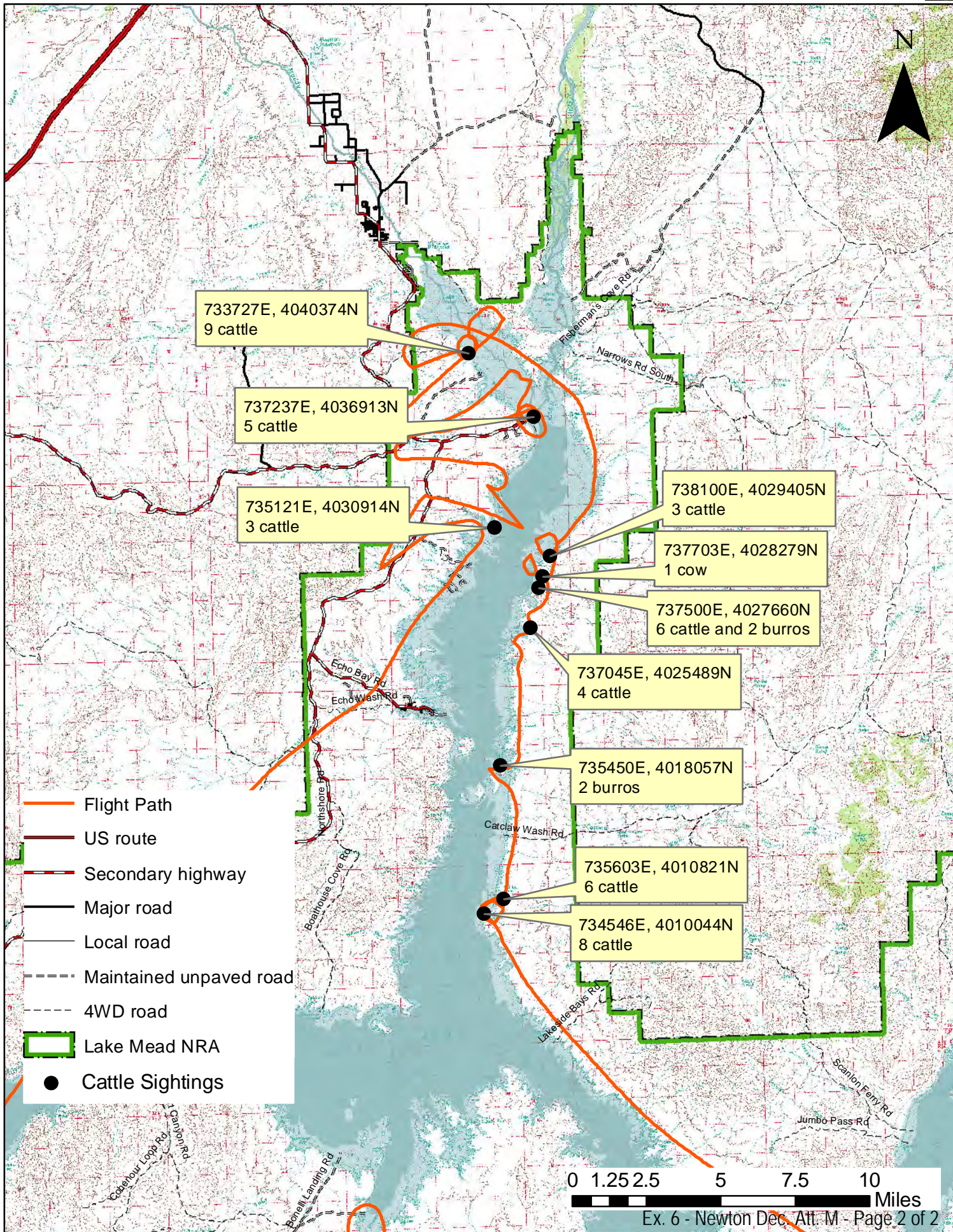
Pilot/Recorder/Observers: Lenon, Newton, Pipkin, Periera

Obsv. #	# Cattle	Latitude/ Northing	Longitude/ Easting	Photo #	Time Stamp	Comments
1	3	0735121	4030914			FIRE COVE
2	5	0737237	4036913			OB DEV. AREA
3	9	0733727	4040374			OWMA
4	3	0738100	4029405			Biesmeir Beach
5	1	0737703	4028279			
6	6 cows 2 bulls	LIME COVE				} LIME COVE
7	4	0737045	4025489			
8	2 bulls	0735450	4018057			
9	6	0735603	4010821			
10	8	0734546	4010044			Twin Springs Cove

Comments

No animals observed in Hualapai + Detrital wash -

Ashley has track log



ATTACHMENT N TO DECLARATION BY ALICE C. NEWTON

United States v. Bundy, No. 2:12-cv-804-LDG-GWF

Cattle Documentation in Rare Plant Habitat

Prepared by Carrie Norman

May 11, 2012

On March 19, 20, and April 18 of 2012 Lake Mead NRA employees (Carrie Norman-Biologist & Karen Maloof-Biological Science Technician) documented cattle at rare plant sites that are visited regularly for monitoring. The cattle do not seem to have any markings on them in the photos taken. The date and time when the photo was taken is stamped on the digital image for accurate documentation.



Figure 1. Cattle tracks through a population of sticky buckwheat at Lime Cove. The red circle points out the sticky buckwheat.

Sticky buckwheat, *Eriogonum viscidulum*, grows in sandy areas along the Overton Arm of Lake Mead. Sticky buckwheat is an annual plant which emerges around March and then flowers and sets seed by April to early May. Allowing cattle to roam free in these rare plant habitats could seriously impact the sticky buckwheat population. If the plant is stepped on or is eaten at any stage of its life cycle (actively growing, flowering, or setting seed) this will effect next year's population.



Figure 2. Cattle trails going through sticky buckwheat habitat at Lime Cove.



Figure 3. Close-up of cattle footprints among sticky buckwheat plants.

The following 2 photos show the same herd of cattle just at different times (10:44 am and 9:43 am).



Figure 4. There were approximately 15-20 cattle in this area at Lime Cove.



Figure 5. A close up of cattle at Lime Cove.



Figure 6. Sticky buckwheat that was stepped on by a cow at Lime Cove.



Figure 7. Cattle footprints through sticky buckwheat populations at Lime Cove.

The photo in figure 8 is in an area west of Northshore Road along a powerline road. This particular area has many acres of gypsum habitat and some sandy habitat intermixed with sensitive/rare species. Las Vegas bearpoppy and ringstem are located in the gypsum habitat. The sandy habitat has threecorner milkvetch and potentially sticky buckwheat.



Figure 8. Cattle footprints in sandy habitat along the Valley of Fire powerline road.

Over the years we have been documenting cattle damage and cattle presence in these rare plant habitats. In 2006 we have photo documentation of approximately 21 cattle at Lime Cove. In 2008 we have photo documentation of cattle at Lime Cove/Glory Hole. In 2009 we have photo documentation of cattle scat and tracks along Overton Beach Road as well as tracks in biological soil crust. In 2009 we have photo documentation of cattle footprints near a Las Vegas bearpoppy (gypsum habitat).

ATTACHMENT O TO DECLARATION BY ALICE C. NEWTON

United States v. Bundy, No. 2:12-cv-804-LDG-GWF

Cattle sighting in the Overton Arm

July 10-11, 2012

On July 10, 2012 three park employees saw a single animal on the east side of the Overton Arm. Park employees included Ashley Pipkin, Janis Lee and Tiffany Pereira. The animal was viewed from the west side of the Overton Arm. The picture was taken from the shore of the Overton Beach Access Road facing east. After reviewing the picture it seems possible that there may have been three animals at this location.



On July 11, 2012 while out collecting weather station data three park employee's saw trespass cattle along the shore of the east side of the Overton arm. Park employees include Carrie Norman, Henry Weckesser and Ashley Pipkin. One bull was sighted as we walked to the first weather station in Kline Hole. All GPS points were taken from a boat. All cattle were located on the shore east of where the point was taken.

UTM Coordinates: 11 0737366
4027823





As the team moved north from Kline Hole along the shore 5 cattle were spotted. One calf and a cow with horns, both appeared dark in color with some white markings. There was one tan cow with a white face, one bull that was predominately black with white markings on the face and one animal of unknown sex that appeared primarily black. No ear marks or brands were observed in this group. All pictures were taken from the boat.

UTM Coordinates: 11 0737293
4028444







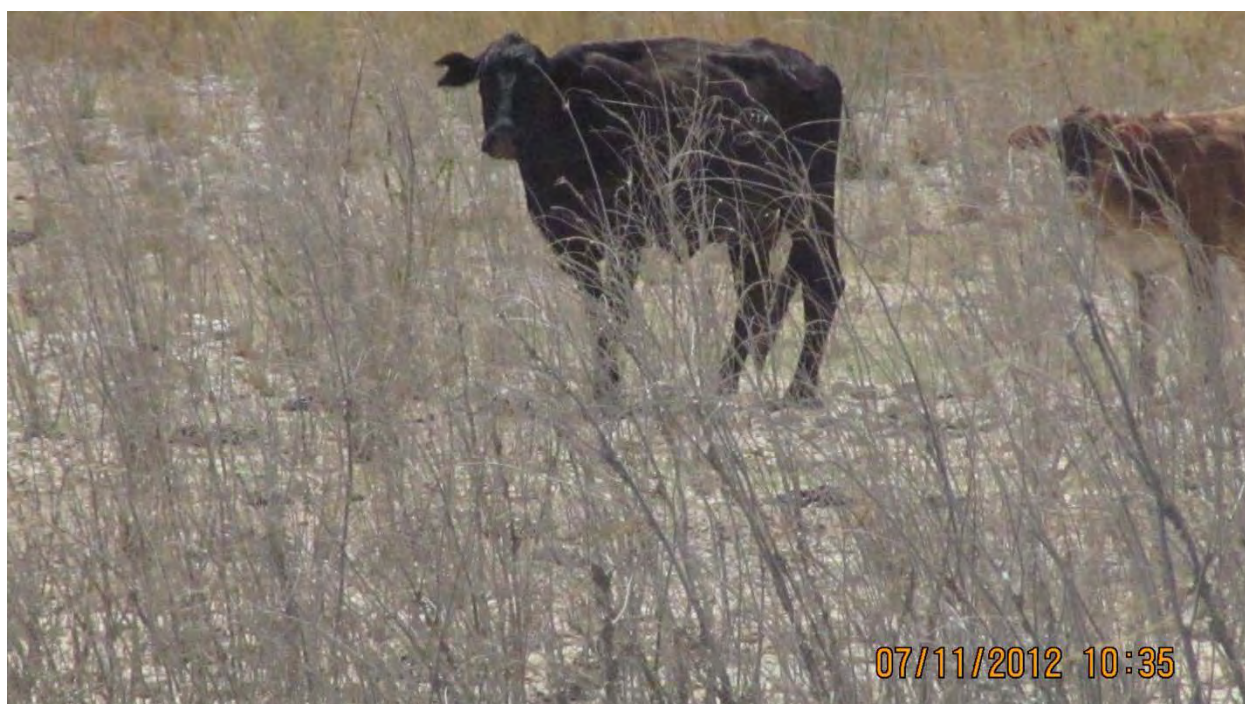
In a cove just north of the group of five there were ten additional cattle spotted. There appeared to be five cows, four calves and one bull. Two of the animals were brown, one was tan, two were dark brown, three were black and 2 calves were brown.

UTM Coordinates: 11 0736828
4029445





One of the animals in the group was identified as a Bundy cow based on its ear markings. The best photo of these markings is shown below.



Farther north a single bull was encountered.

UTM Coordinates: 11 0739178
4035703

