

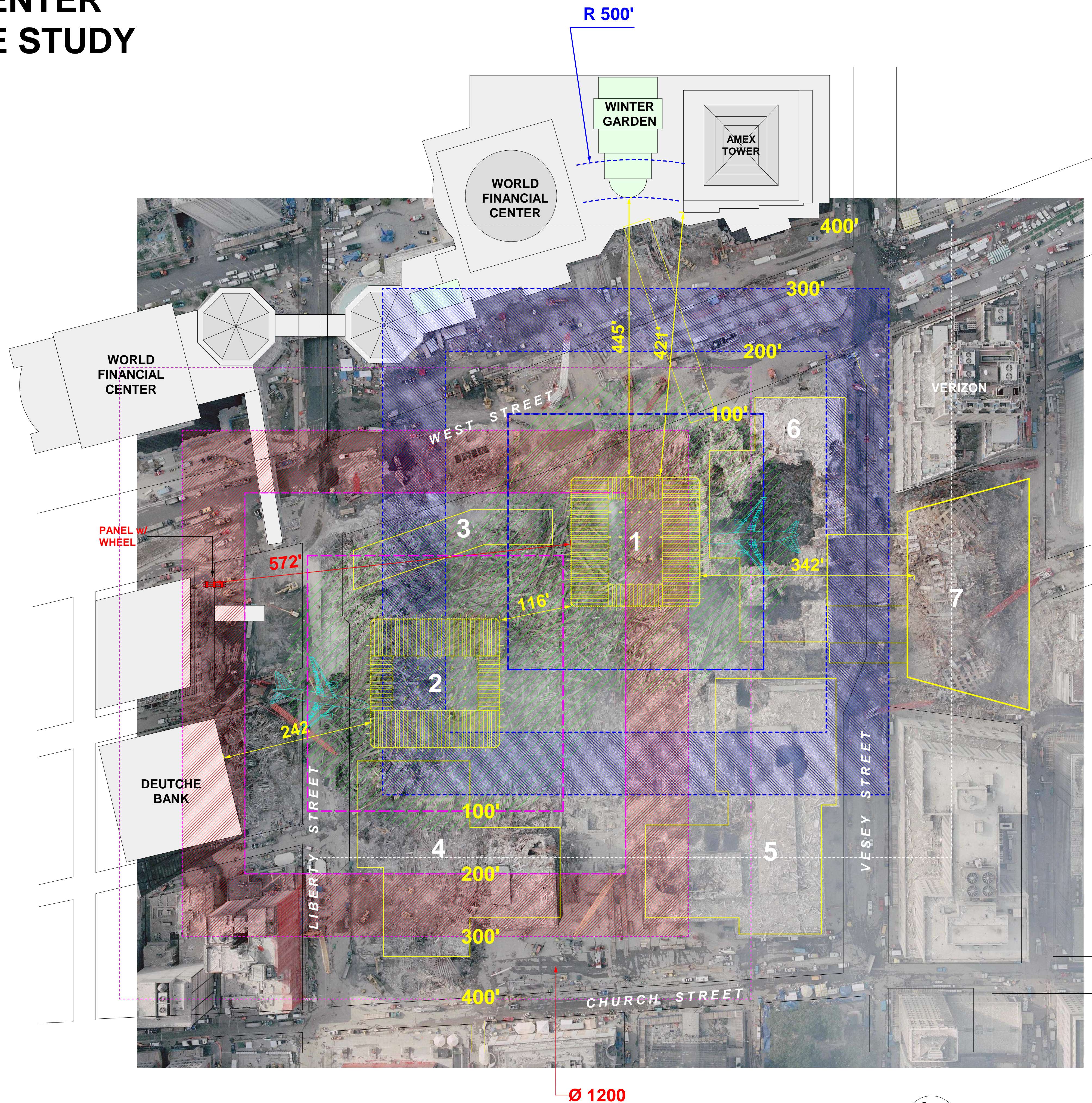
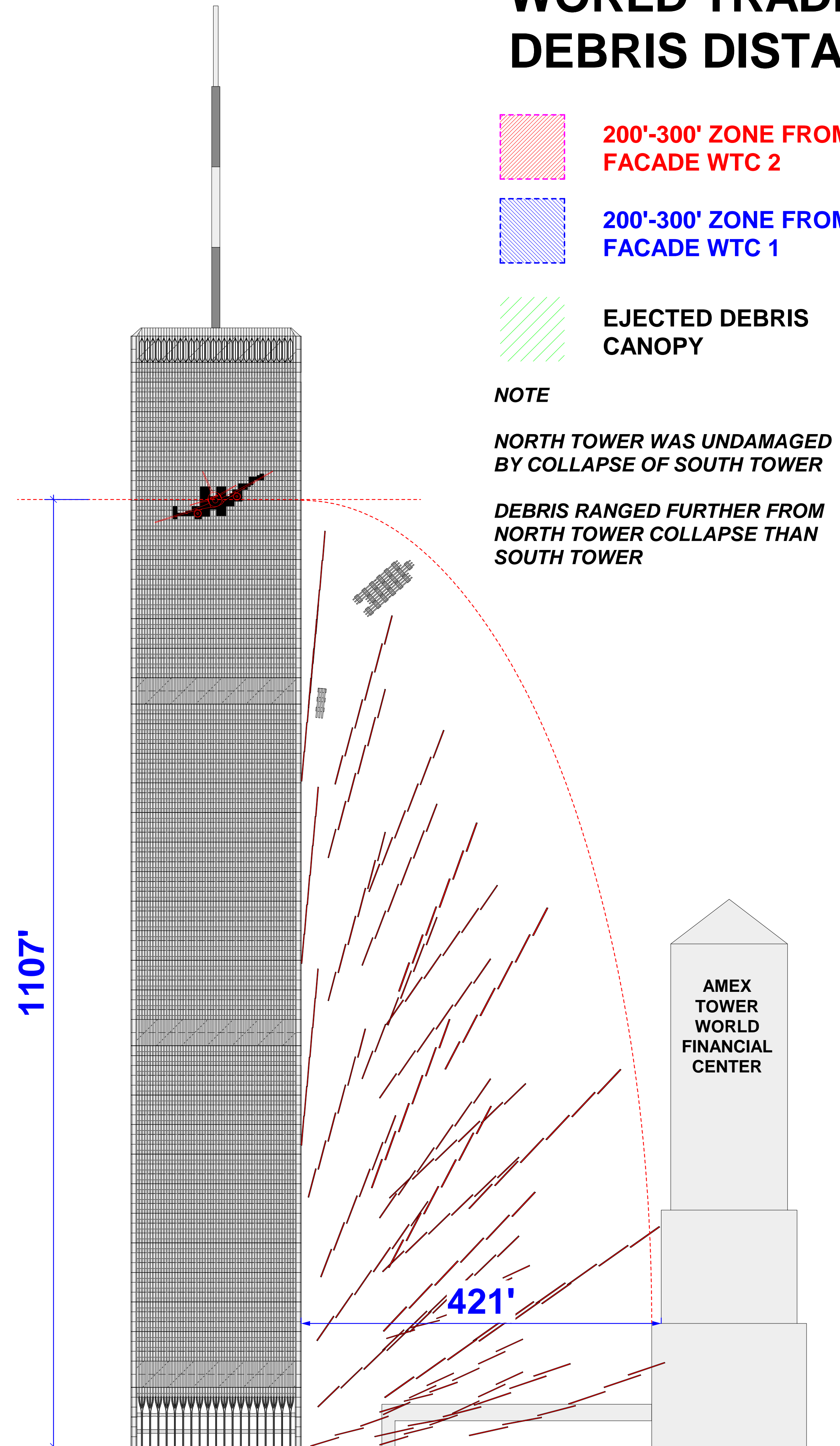
# WORLD TRADE CENTER DEBRIS DISTANCE STUDY

- 200'-300' ZONE FROM FACADE WTC 2
- 200'-300' ZONE FROM FACADE WTC 1
- EJECTED DEBRIS CANOPY

**NOTE**

NORTH TOWER WAS UNDAUNGED BY COLLAPSE OF SOUTH TOWER

DEBRIS RANGED FURTHER FROM NORTH TOWER COLLAPSE THAN SOUTH TOWER



**PRELIMINARY**

Jeffrey Sandor Orling Architect  
675 North Terrace Avenue  
Mount Vernon, NY 10552

